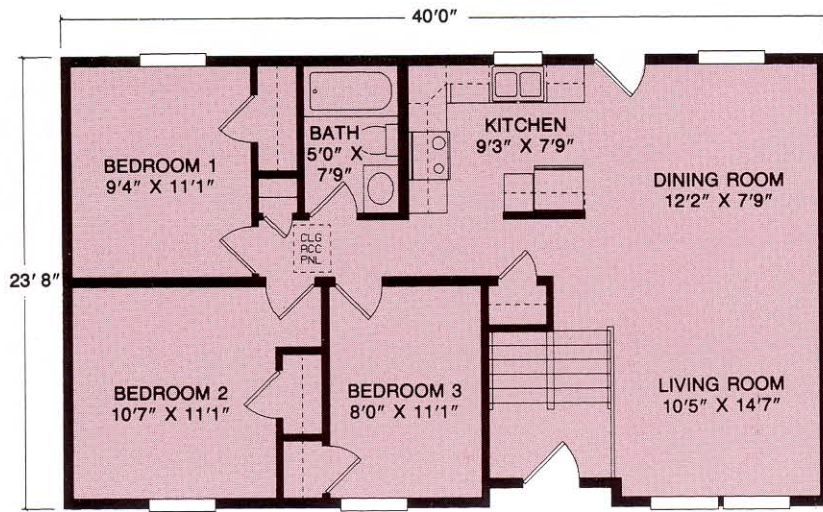


RAISED RANCH PLANS

KEYSTONE SERIES

Designed For Spacious, Distinctive Living

**Superior
Builders**



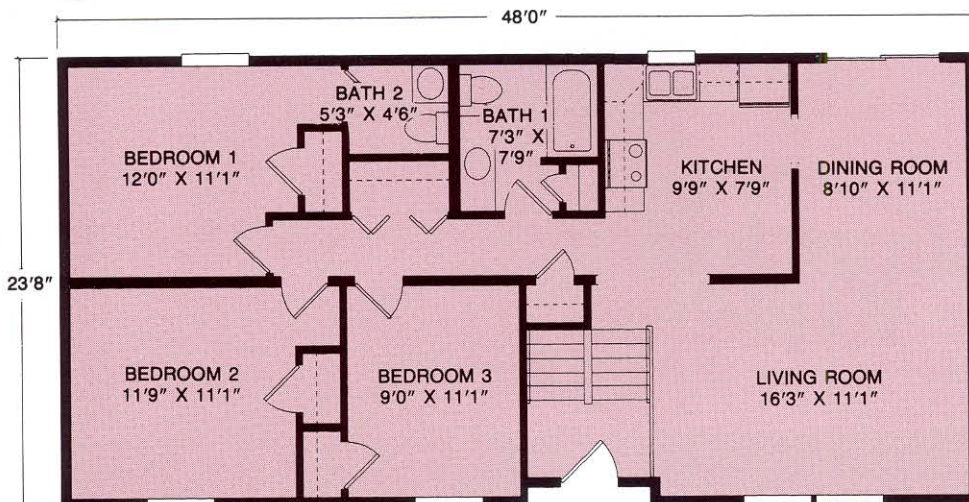
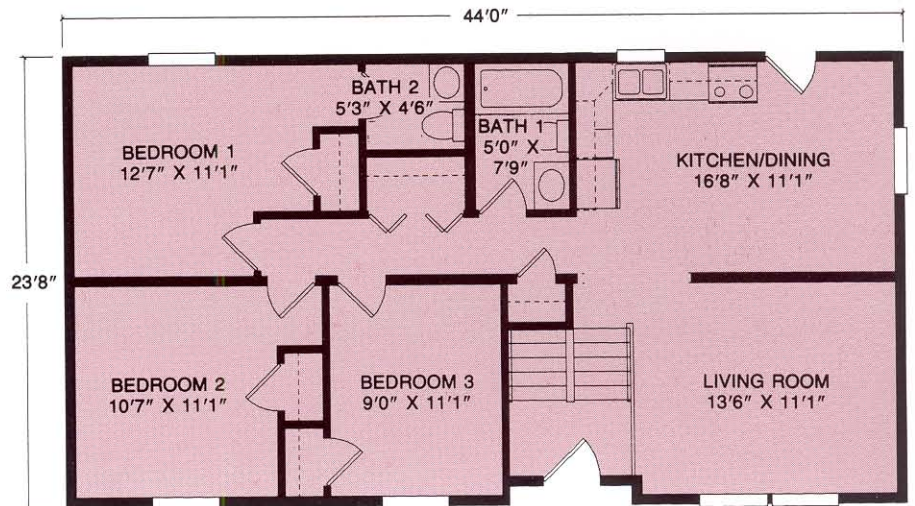
The Hanover

Plan No. 106 ■ 946 SQ. FT.

A design that accentuates space. Open living room and dining room area offers expansive living space. Three large bedrooms with ample closet space and full bath provide comfortable, private surroundings. Also available in 26' width.

The Grafton

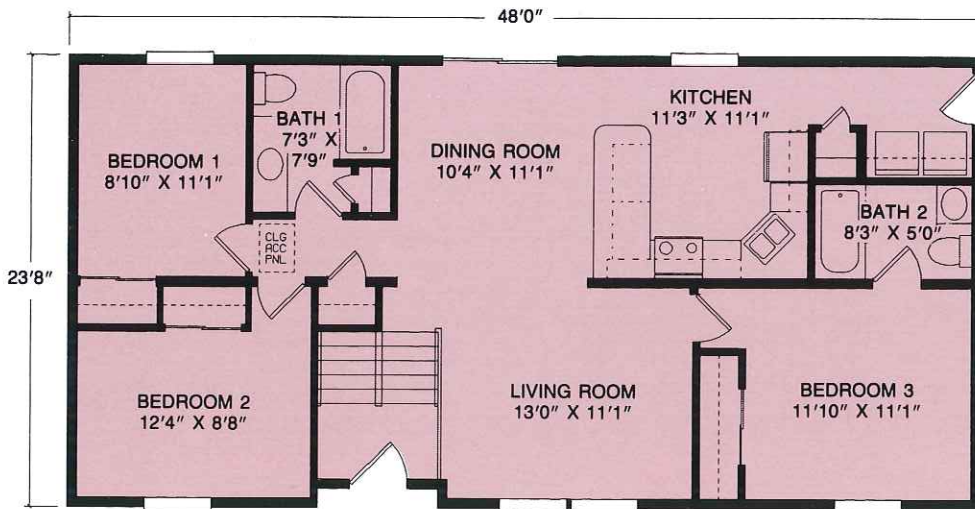
Plan No. 111 ■ 1041 SQ. FT.
 Ideal for the family who values privacy. Three bedrooms with generous closet space, one and one half baths are located at a discrete distance from the living room. Also available in 26' width.



The Lincoln

Plan No. 113 ■ 1136 SQ. FT.

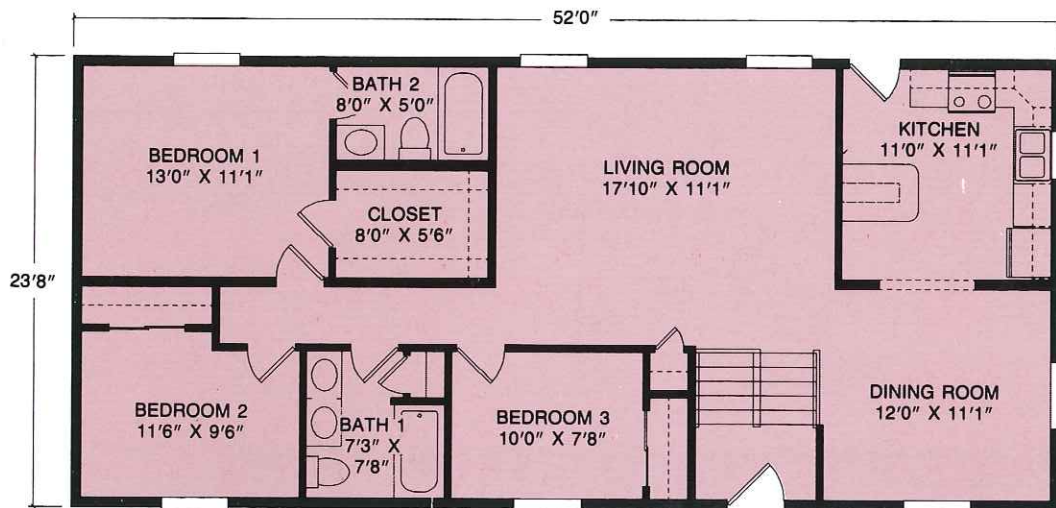
Comfort and convenience are yours with master bedroom suite with private bath, two additional bedrooms, large bath, utility closet, spacious kitchen and "L" shaped living room and dining room area. Also available in 26' width.



The Cranston

Plan No. 118 ■ 1136 SQ. FT.

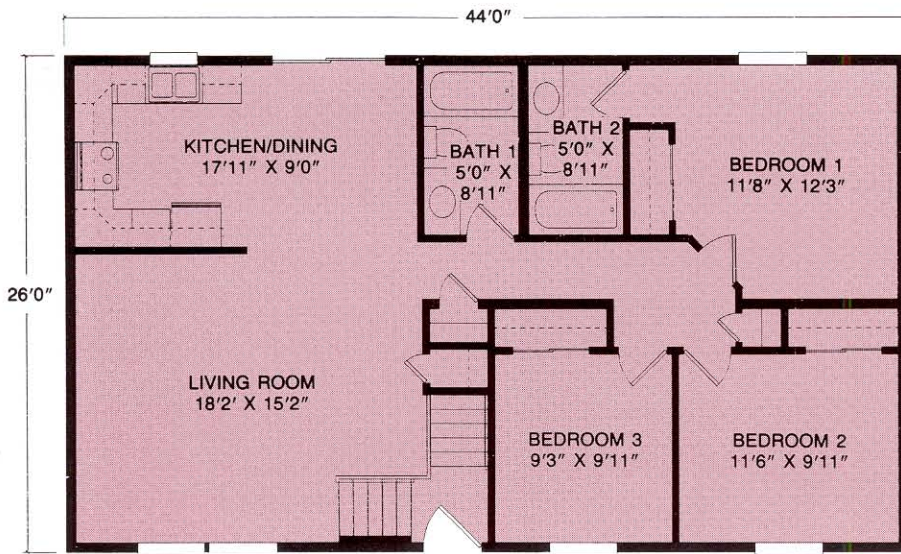
A unique floor plan offers space and privacy. Master bedroom suite with private bath is nestled away from two additional bedrooms and full bath. Also available in 26' width.



The Shiloh

Plan No. 119 ■ 1231 SQ. FT.

Expansive open living room, creates an impressive "great room". Master bedroom suite with private bath, two additional spacious bedrooms and a full bath offer comfortable living. Also available in 26' width.

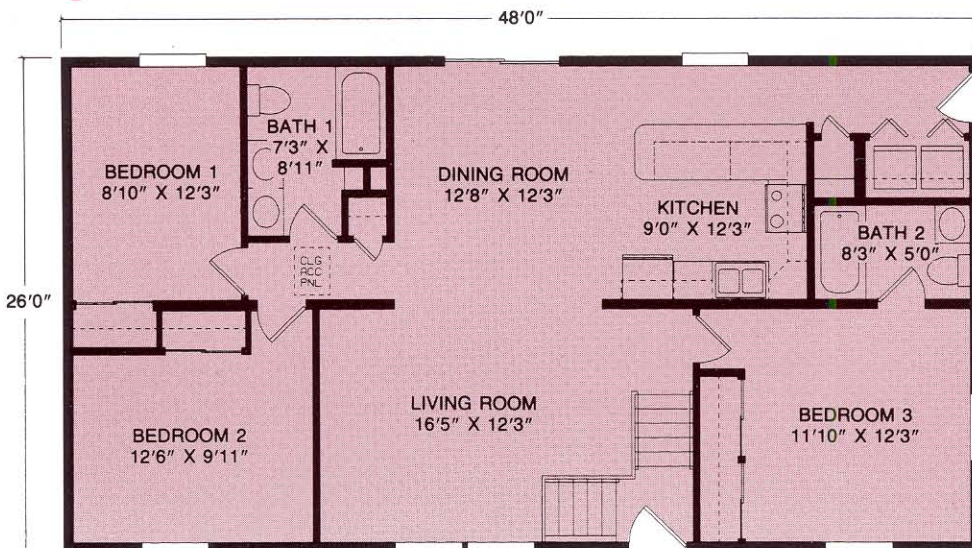
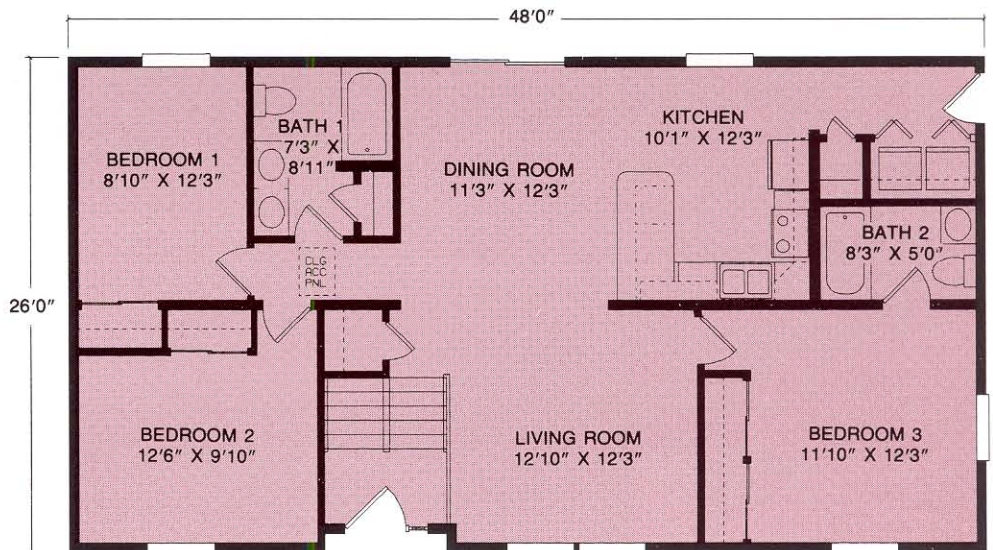


The Herndon

Plan No. 217 ■ 1144 SQ. FT.
Perfect for family living with master bedroom suite with private bath and large closet plus two additional bedrooms and full bath. Also available in 27'6" width.

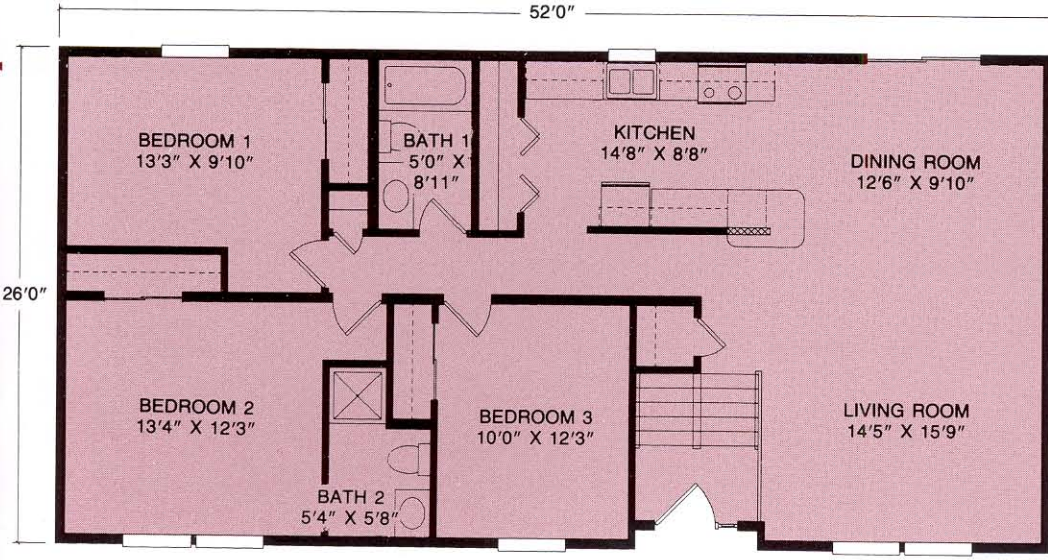
The Millville

Plan No. 225 ■ 1248 SQ. FT.
Comfort and convenience are yours with master bedroom suite with his and her closets and private bath, two additional bedrooms, large bath, utility closet, kitchen with snack bar, and dining area. Also available in 27'6" width.



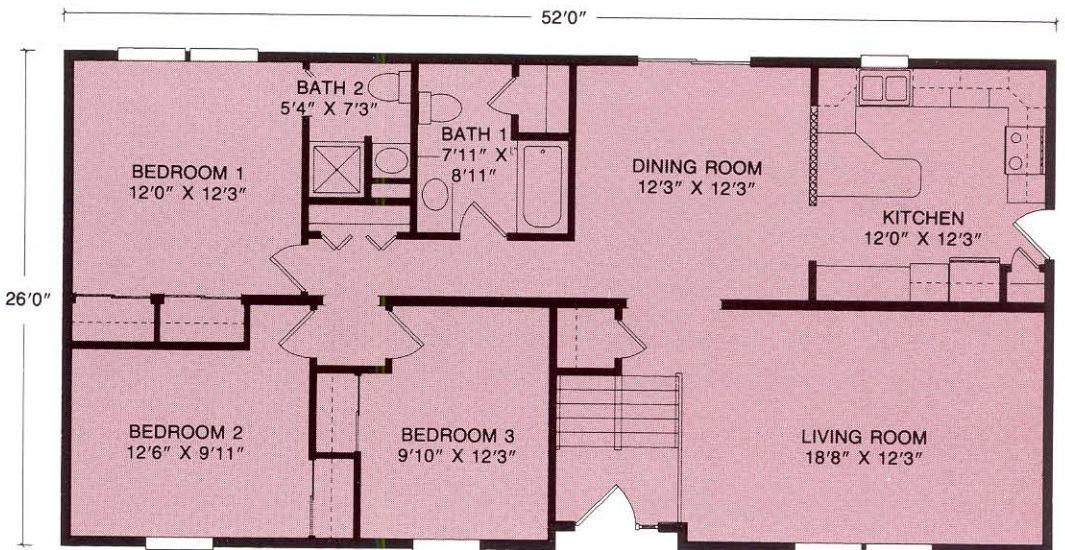
The Oreland

Plan No. 260 ■ 1248 SQ. FT.
Master bedroom suite with private bath and large closet plus two additional bedrooms and full bath provide space and privacy. Unique kitchen layout with utility closet offers convenience. Also available in 27'6" width.



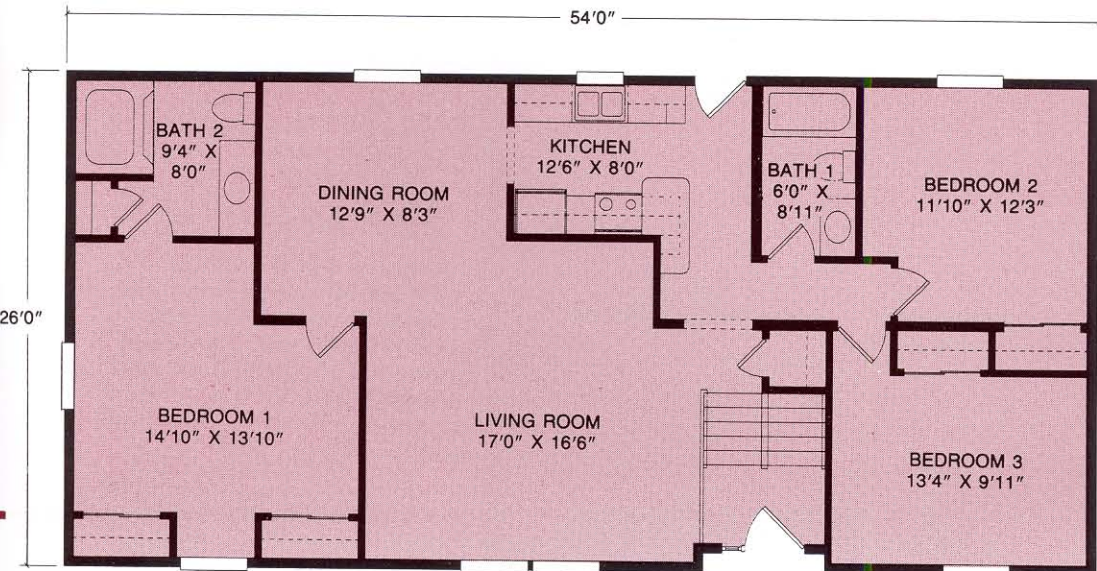
The Hillsville

Plan No. 218 ■ 1352 SQ. FT.
 An innovative design that presents endless options with the great living space created by spacious, open kitchen, dining room and living room area. Three bedrooms and one and three quarter baths. Also available in 27'6" width.



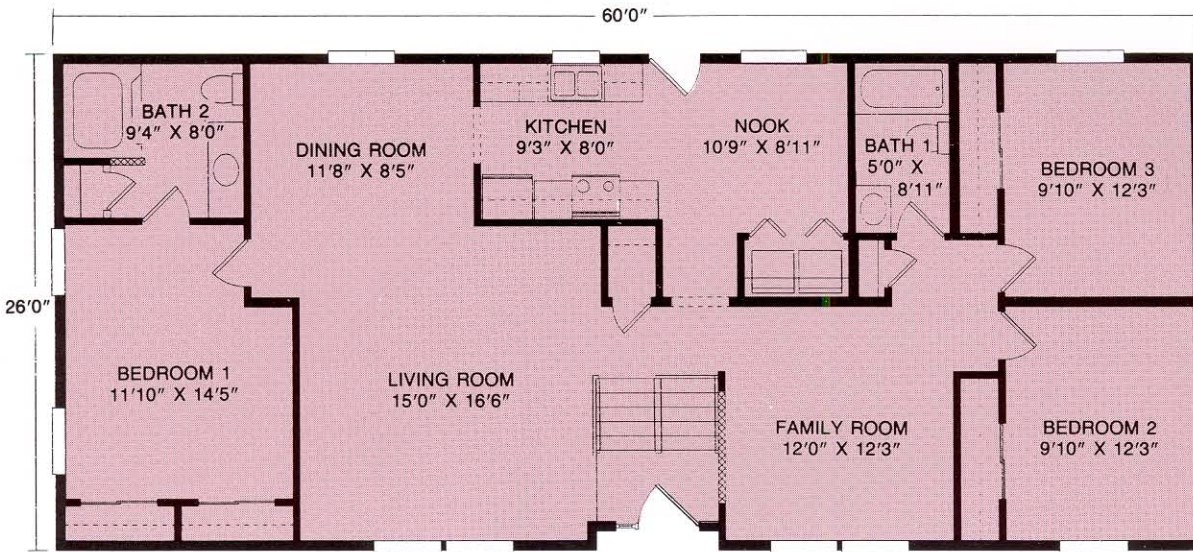
The Richmond

Plan No. 219 ■ 1352 SQ. FT.
 Perfect for family living with master bedroom suite with private bath and large closets plus two additional bedrooms and full bath. Also available in 27'6" width.



The Salona

Plan No. 216 ■ 1404 SQ. FT.
 Master bedroom suite with private bath and large closet plus two additional bedrooms and full bath provide space and privacy. Unique kitchen layout with snack bar offers convenience. Also available in 27'6" width.

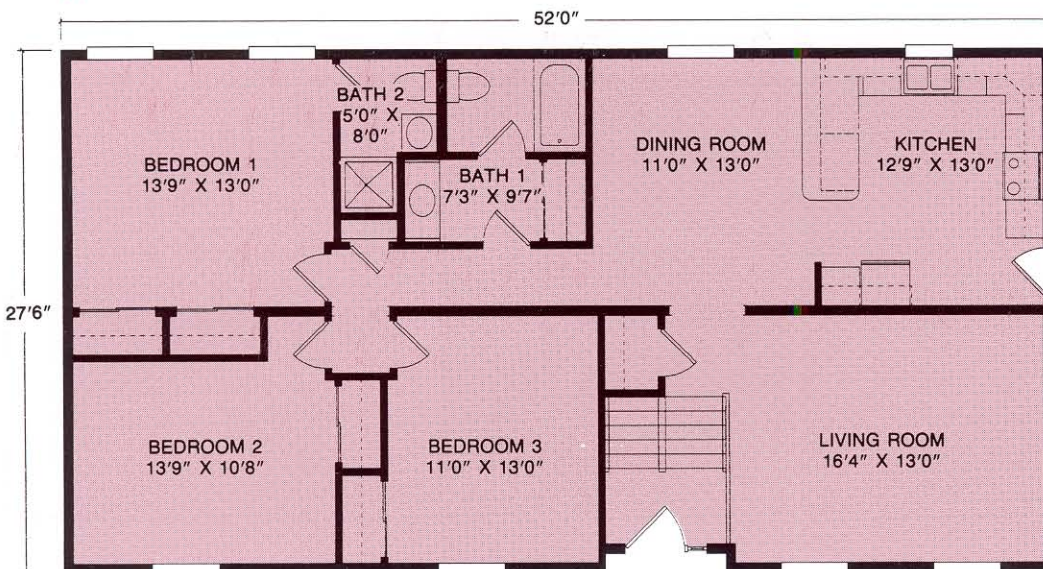
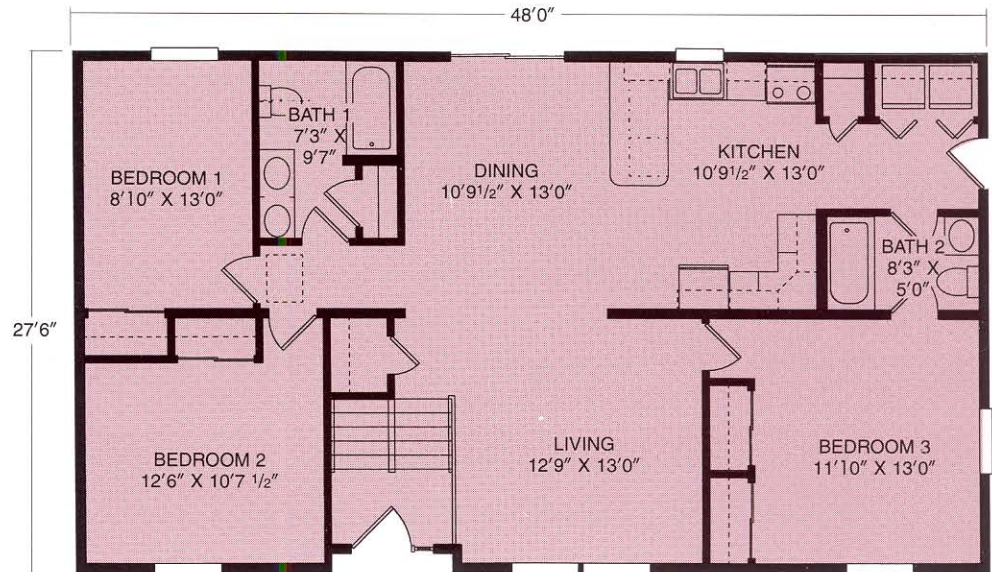


The Woldale

Plan No. 221 ■ 1560 SQ. FT.
 Relax in charming comfort featuring cozy breakfast nook and large kitchen, plus master bedroom suite with private bath, plus two additional bedrooms and full bath. Also available in 27'6" width.

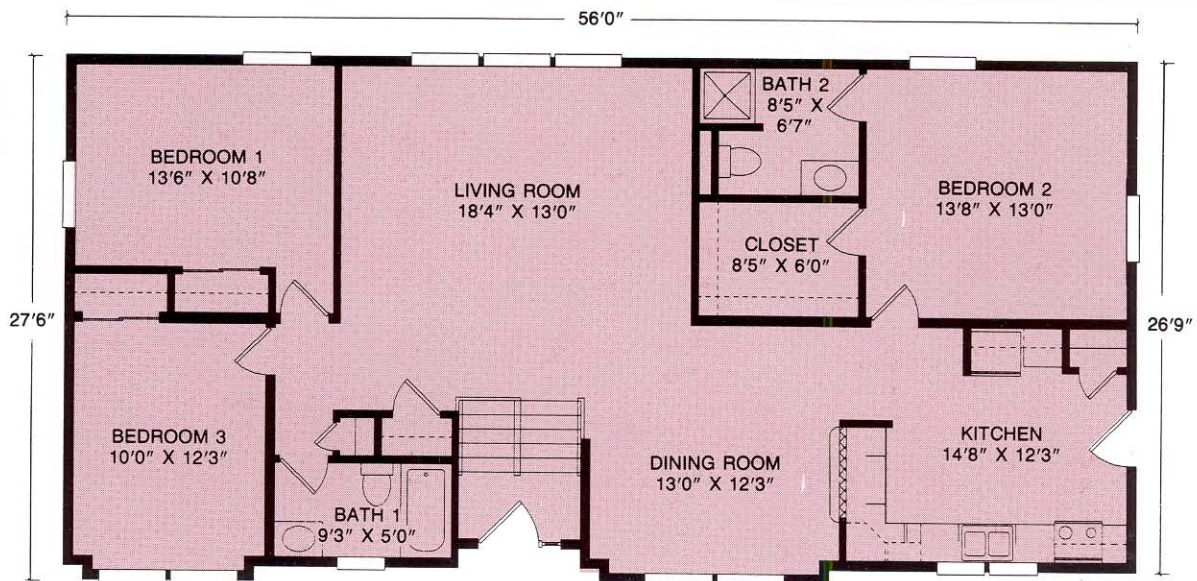
The Danville

Plan No. 316 ■ 1320 SQ. FT.
 Master bedroom suite with private bath and large closet plus two additional bedrooms and full bath provide space and privacy. Unique kitchen layout with utility closet offers convenience.



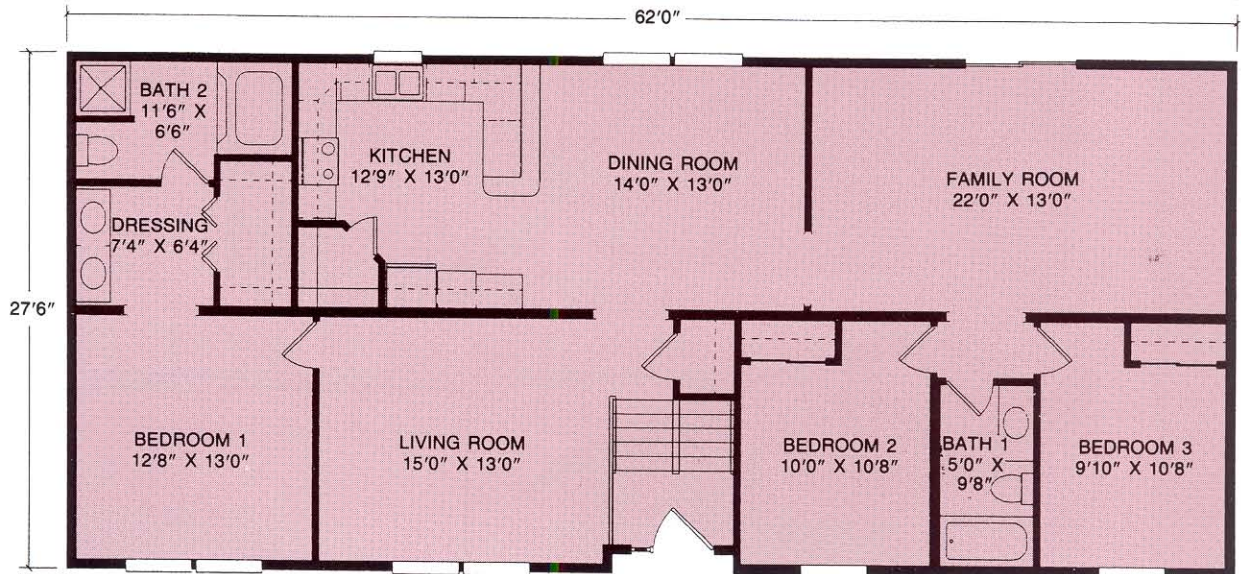
The Brenton

Plan No. 311 ■ 1430 SQ. FT.
 Perfect for family living with master bedroom suite with private bath and large closet plus two additional bedrooms and full bath.



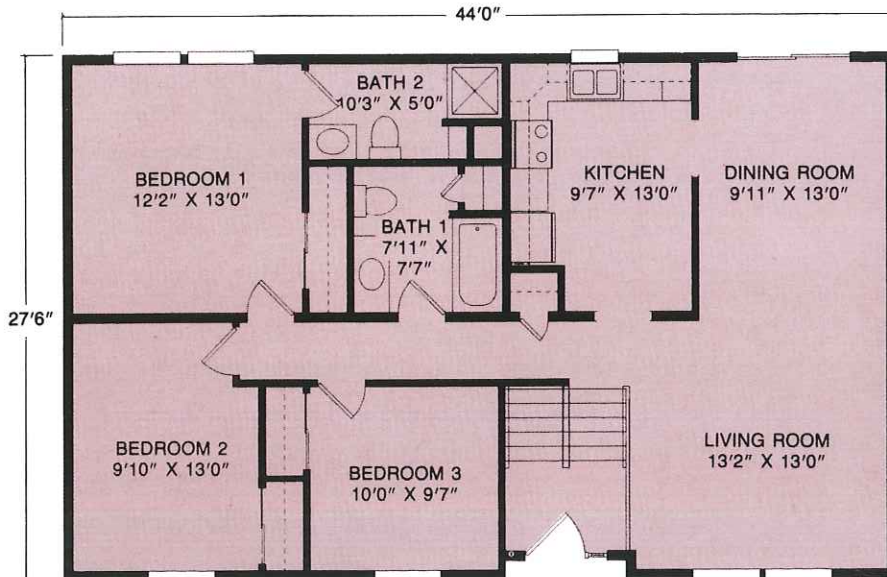
The Donora

Plan No. 331 ■ 1540 SQ. FT.
 Spacious living/great room welcomes you. Large master suite with private bath and walk-in closet. Plus two additional bedrooms and full bath.



The Whitney

Plan No. 333 ■ 1705 SQ. FT.
 Stunning family room is hallmark of this creative home that also features large kitchen with walk-in pantry closet. Spacious master suite with lavish private bath, plus two additional bedrooms and full bath.



The Elkland

Plan No. 323 ■ 1210 SQ. FT.
 Formal living and dining room play perfect hosts to guests. Master bedroom suite with private bath, plus two additional bedrooms and full bath.

Superior Builders

A DIVISION OF MUNCY HOMES INC.
 1565 PA ROUTE 442 EAST
 MUNCY, PA 17756
 (570) 546-2264

MEMBER: **MODULAR**
 HOME BUILDERS ASSOCIATION

Due to our continuing program of Product Improvement, Plans, Specifications, Materials and Prices are subject to change without notice.

Renderings and floor plans are promotional illustrations that approximate size and may depict optional or suggested features.

5M KBFPT 04/14

Your Builder/Developer

THE BUILDER/DEVELOPER IS AN INDEPENDENT BUSINESSMAN, NOT AN AGENT OF SUPERIOR BUILDERS. From time to time, Builder/Developer may perform service work at the request of Superior Builders, but in doing so Builder/Developer is still an independent contractor and is alone responsible for the quality of his work. SUPERIOR BUILDERS SHALL HAVE NO RESPONSIBILITY OR LIABILITY FOR ANY ACT OR OMISSION OF BUILDER/DEVELOPER OR ANY MATERIAL PROVIDED BY BUILDER/DEVELOPER, UNDER ANY CIRCUMSTANCES.